

The Queen Elizabeth Olympic Park

The park that visitors see newly opened for the London 2012 Olympic Games, with state-of-the-art stadia and sports buildings, was created and built upon land that once had a distinctive industrial appearance and character. In the nineteenth and twentieth centuries, this was the heart of London's industry, although now it has all but vanished. The infrastructure of the waterways, the industrial buildings in the Fish Island Conservation Area, the Three Mills tide mills, Abbey Mills pumping station and other buildings and structures around the site survive and bear testimony to the industrial past; others have been entirely lost. As the world comes to visit a new London landscape created on top of the old, we celebrate both moments in history.

Olympic map below – as first seen in Heritage Today, March 2012.



1. Velodrome
2. Hackney Wick Station
3. Stratford Station
4. Aquatic Centre
5. Olympic Stadium
6. Old Ford Lock
7. River Lea
8. Pudding Mill Lane Station
9. Bryant and May Match Factory
10. Three Mills
11. Abbey Mills pumping station
12. Bromley-by-Bow Station

All photographs © Marion Davies and Debra Rapp



Spare clutches, JJ Autos, 2007
JJ Autos traded in car parts on Carpenters Road before relocating to South Woodford.



Ahmet Refik, glass bender, John Bowden Ltd, 2006
Ahmet stokes the fire of a kiln that is over 200 years old.



Victorian moulds for bending glass, John Bowden Ltd, 2006
Some of the moulds date back to the 1820s and would have required 20 men to lift them.



Factory floor and view of kiln, John Bowden Ltd, 2006
Established in 1800, the former John Bowden Ltd factory was situated on the edge of the Olympic site. Some kilns reach 650°C, depending on the desired curve of the glass.



Shalom and Eva packaging bagels, Mr Bagels Ltd, 2006
Long-life bagels were packed and sealed from this food factory. Nearby was UK Snacks which supplied Asian savoury products.



Folding Machine, MR Printers, 2007
This small printing company produced leaflets for local Indian and Bangladeshi restaurants and has relocated to Barking.



Peter McManus (Fig 1) by a stator from a high-voltage electric motor, and Habi Hehari (Fig 2) at a milling machine, Dowding and Mills, 2007
Dowding and Mills is the largest industrial engineering and electronics support provider in the UK. Sulzer Turbo Services acquired the company in 2010. On the site for over 40 years, this branch still operates from just outside the Olympic Park in White Post Lane.



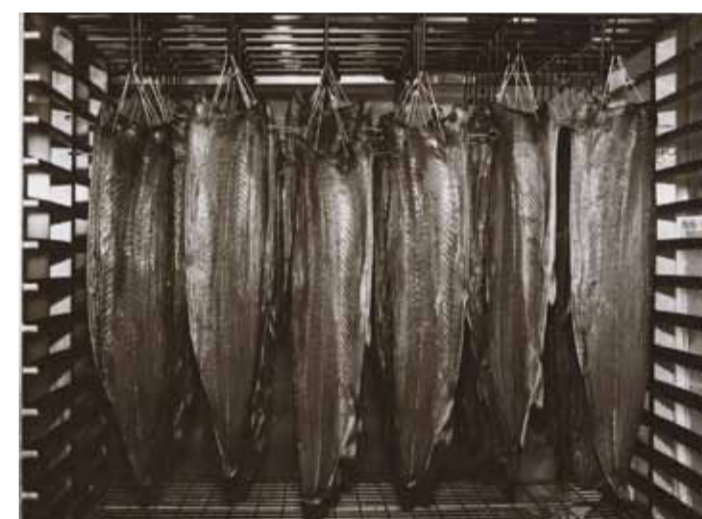
Two silk-screen printers, Capital Print and Display, 2007
Capital Print operated from Marshgate Lane and printed large-format prints and posters for hoardings.



Storage tanks, Samuel Banner & Co Ltd, 2007
Samuel Banner & Co (est. 1860) supplies solvents and chemicals, and patented Turpentine ('white spirit') in 1885. Part of the Banner Chemicals Group, the company has relocated to Middlesbrough.



Hydrochloric acid tanks, Parkes Galvanizing Ltd, 2006
During the galvanizing process, steel is immersed into hydrochloric acid tanks and hot molten zinc at 450°C.



'London Cure' smoked salmon hanging in the kiln of H Forman & Son, 2006
H Forman & Son, established in the East End over a century ago, is the last of the original London smoked salmon smokeries. Run by the great-grandson of the founder, this family business and restaurant has relocated to Fish Island opposite the Olympic Park at Old Ford Locks.



De-boning meat prior to mincing, Harringay Meat Traders Ltd, 2006
Harringay Meat Traders are wholesale butchers and doner kebab manufacturers. The company has relocated to Dagenham, Essex.



ENGLISH HERITAGE