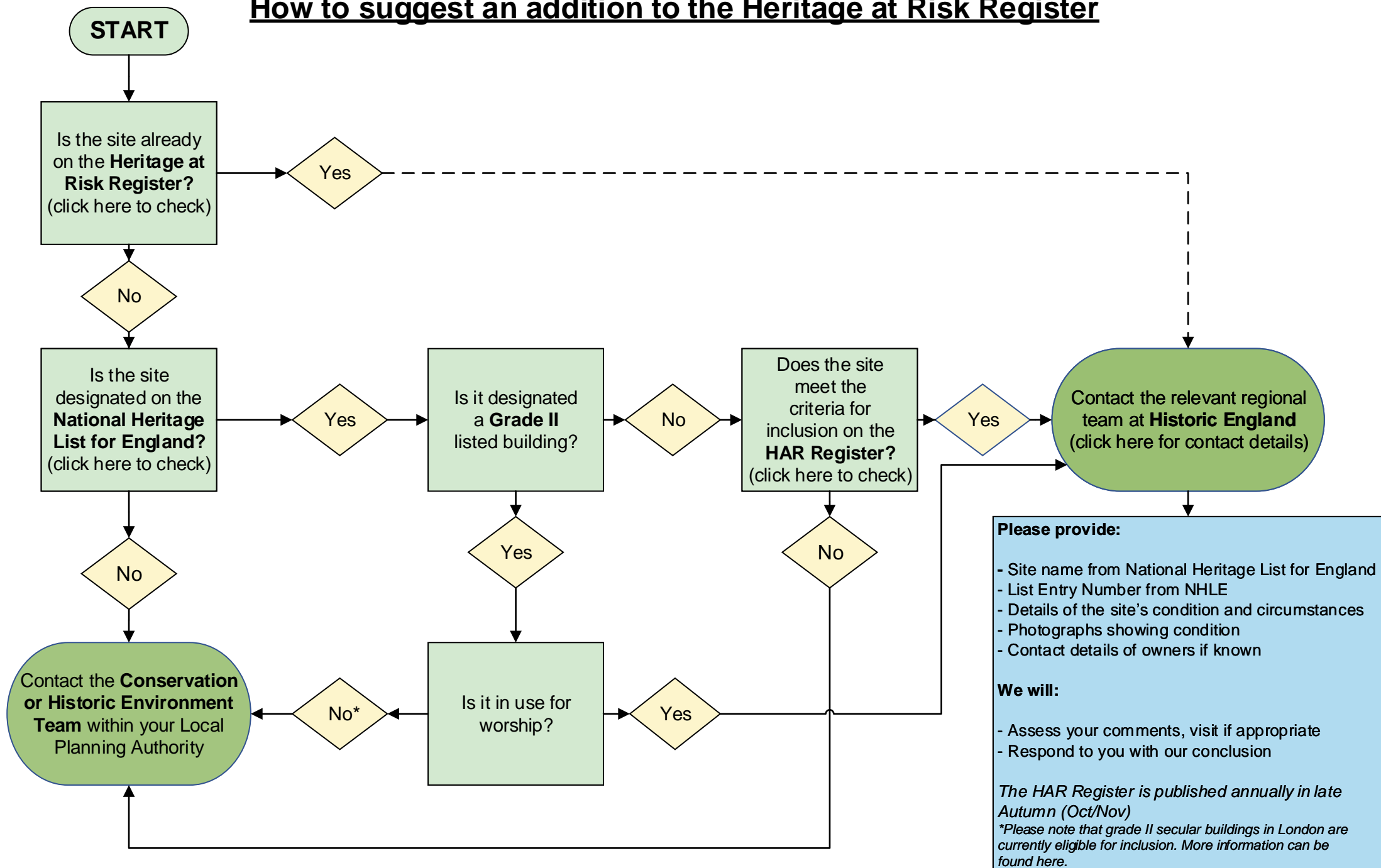


How to suggest an addition to the Heritage at Risk Register



Please provide:

- Site name from National Heritage List for England
- List Entry Number from NHLE
- Details of the site's condition and circumstances
- Photographs showing condition
- Contact details of owners if known

We will:

- Assess your comments, visit if appropriate
- Respond to you with our conclusion

The HAR Register is published annually in late Autumn (Oct/Nov)
**Please note that grade II secular buildings in London are currently eligible for inclusion. More information can be found [here](#).*

If you would like this document in a different format, please contact our customer services department on:

Tel: 0370 333 0607

Email: customers@HistoricEngland.org.uk